

**LOVELL**  
HOMES

PRESENTS



WESTON WOODS

CHESHIRE

IN PARTNERSHIP WITH



**LATIMER**  
by Clarion Housing Group

WELCOME TO



Be it your first home, your family home or your forever home, the elegant collection of 3, 4 and 5 bedroom homes and 2 and 3 bedroom bungalows at Weston Woods is an enticing opportunity to connect to an intimate and established community which represents quintessential village life in Cheshire.



CGIs are indicative only, external finishes, features and road treatments may vary.



Shawbrook Manor Ribblesworth show home interior



Shawbrook Manor Ribblesworth show home interior

Every one of the homes we build is built with one crucial extra element: pride. Lovell only builds high-quality homes and we make customer satisfaction our number one priority. This means that you enjoy extraordinary value for money, as well as a superior and distinctive home.

Lovell uses sustainable products wherever possible. So not only do our homes help look after the environment, but for homeowners, they also offer excellently insulated properties, minimal maintenance and they stand the test of time.

All of our homes are of extremely high quality and specification. Combining carefully considered contemporary design with rigorous build quality, Lovell homes are designed with flair, character and attention to detail. We want your home to be interesting, inviting and individual.

**Most of all, once you step through the front door, we want you to know you're home.**



Shawbrook Manor Ribblesworth show home interior



WESTON WOODS



It's what makes  
our homes unique

**At Lovell we believe your home should be more than about the right place at the right price.  
It should also reflect your personality and tastes.**

That's why every Lovell home has Style, Quality and Value (or SQV, as we call it) built-in from the start, making your new home somewhere you'll be proud to call your own.

S

### INSPIRING STYLE

---

A Lovell home is well-known for contemporary design and featuring the latest in stylish fixtures and fittings, but that's not all. With the Lovell Inspirations range you can add all sorts of extras to make it truly your own.

Q

### UNRIVALLED QUALITY

---

We are particularly proud of the superior specification and workmanship every one of our properties offers, with a rigorous attention to detail you'll simply love.

V

### EXCEPTIONAL VALUE

---

But most of all, you'll love how surprisingly affordable and easy to own a Lovell home can be, especially with the range of purchase options available.



WESTON WOODS



## LIFE AT WESTON WOODS

Imagine spending a sunny afternoon watching the cricket on the green. How about a social evening with family and friends in the historic, seventeenth century White Lion lounge bar and atmospheric restaurant? Or, just spending quality time with your children in safe play, open spaces. This is just part of the lifestyle at Weston, a village rooted in the traditions of neighbourhood and neighbourliness.

Weston places quality of life above pace of life, allowing residents to absorb a fulfilling lifestyle and carefree retreat from the every day. If you enjoy a spot of golf you'll get plenty of practice, with a number of courses close by.

The Ofsted outstanding Weston Village Primary School is there to provide the best start in life for your children's education, allied to the secondary school in nearby Shavington.

Just a short trip down the road, the medieval market town of Nantwich has a charm all of its own, with the highest concentration of listed buildings of any English town, most notably Tudor and Georgian architecture. Strolling its streets you can enjoy one of Cheshire's most historic towns, host to the annual International Cheese Show, food festivals as well as a Blues and Jazz Festival.

The much admired Cheshire way of life is waiting for you at Weston Woods.



WESTON WOODS



Weston village hall



The White Lion, Weston



All Saints Church, Weston

## PLACES TO SEE, LOCATIONS TO EXPLORE



Although Weston Woods offers privacy and escape, it also benefits from a great and well connected location, sitting within easy reach of many exciting key towns and cities when you're in the mood to explore.

The road and rail networks from Weston are especially good with rapid access to the potteries (14 miles), Nantwich (6.5 miles), Chester (27 miles), itself a real treat for history and shopping lovers. Crewe is also just three and a half miles away.

Via train from Crewe, Liverpool is just a 35 minute journey and Manchester 39 minutes, two of the most vibrant and culturally significant cities in the UK. Plus, Manchester and Liverpool also have internationally connected airports.

For nature lovers, the Staffordshire moorlands and Peak District are to the east, so it's easy to access walking, cycling and outdoor pursuits a plenty.



Old Dee Bridge, Chester



Churche's Mansion, Nantwich

  
WESTON WOODS

## IDEALLY LOCATED

By train, Crewe is a key rail hub for the North West, providing both business and leisure opportunities in the major cities of Liverpool and Manchester and a less than two hour journey to London. By car there are places of interest, north, south, east and west, with the A500 connecting to the M6 as well as the A530 and A534 trunk roads.

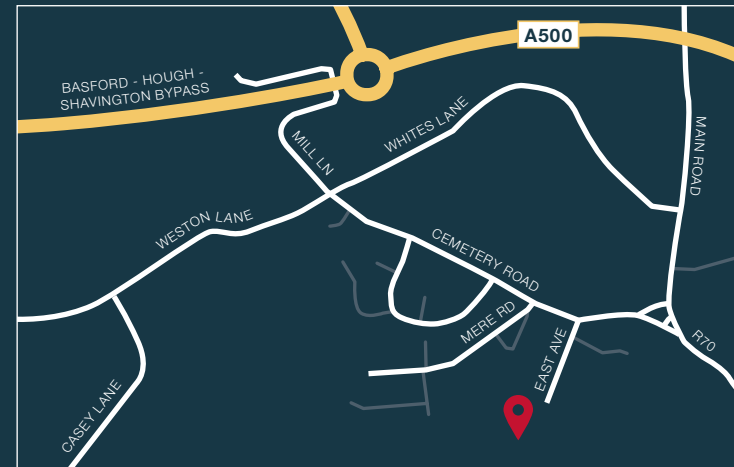


Sat Nav postcode: CW2 5LZ

\* Distances and times taken from Google Maps.

## FROM CREWE

Head east on A532 at the roundabout, take the 1st exit onto Earle St/A532. At the roundabout, take the 2nd exit onto Manchester Bridge/A532. At the next roundabout, take the 2nd exit onto Macon Way/A532. At the roundabout, take the 2nd exit onto Weston Rd/A532 and travel for about a mile. At the roundabout, take the 2nd exit onto Weston Rd/B5472 and travel approximately a mile before turning right onto Main Rd. Travel just under a mile where you will then see the White Lion. Turn right onto Cemetery Road and then East Avenue is on your left. Travel to the end of the road and Weston Woods will be in front of you.



## FROM THE M6

At junction 16 take the A500 to Crewe/Nantwich. At Meremoor Moss Roundabout, take the 1st exit onto A531. At the next roundabout, take the 3rd exit onto Main Rd and travel approximately a mile where you will see the White Lion on the left. You need to take a left at the White Lion onto Cemetery Rd. East Avenue is then on your left and Weston Woods can be found at the end of the road.

# HOW TO PURCHASE

Buying a new Lovell home couldn't be easier. Follow our guide and you'll be home in no time!



## REGISTER

Register your interest with Lovell and we will put you in touch with our Independent Financial Advisor for free advice. You can seek your own advice but you will also need to be qualified by Lovell.



## CHOOSE AND RESERVE

Secure your new home with a reservation fee which goes towards the total purchase price. It's then reserved in your name while the legal processes are completed.



## KEEPING THINGS MOVING

Following reservation, we will send on the contract documents to your solicitor. Arrange your mortgage if you need one. You can do this yourself or we can put you in touch with an Independent Financial Advisor to help.



## EXCHANGING CONTRACTS

Once you've had your formal mortgage offer, your solicitor will inform you when it's time to exchange contracts. You will now pay your deposit, which will be sent to us with your signed contract.



## NEARLY THERE

Under the terms of the contract we need to allow time for financial completion. Once this has happened, we will ask your solicitor to request funds and pay the balance of the purchase price. The deeds are transferred into your name and you now own your new Lovell home!



## MOVING IN

We will arrange for your meters to be read on the day of legal completion. Our Sales Executive will hand you the keys and a handover certificate.

The direction your new home faces, its exterior details and construction materials may differ from what you see in this brochure. Individual features such as kitchen and bathroom layouts, doors and windows may vary. The illustrations used throughout are indicative and may be subject to change. For detailed information on individual plots, ask our sales staff. The dimensions in the brochure are within 50mm (2") but shouldn't be used as an accurate basis for furnishings, furniture or appliance spaces. You will need to take actual measurements. Specification details are subject to change without prior notice. Should a replacement be required, this will be to an equal or higher standard. Consequently these particulars represent a general guide only and cannot be relied upon as accurately describing and of the Specified Matters prescribed by any order made under Consumer Protection from Unfair Trading Regulations 2008 (CPRs). Weston Woods is a marketing name and may not form part of the final postal address. This brochure is a purchasing guide and does not form a contract, part of a contract or a warranty. Details are correct at time of going to print.



WESTON WOODS



WESTON WOODS

CHESHIRE

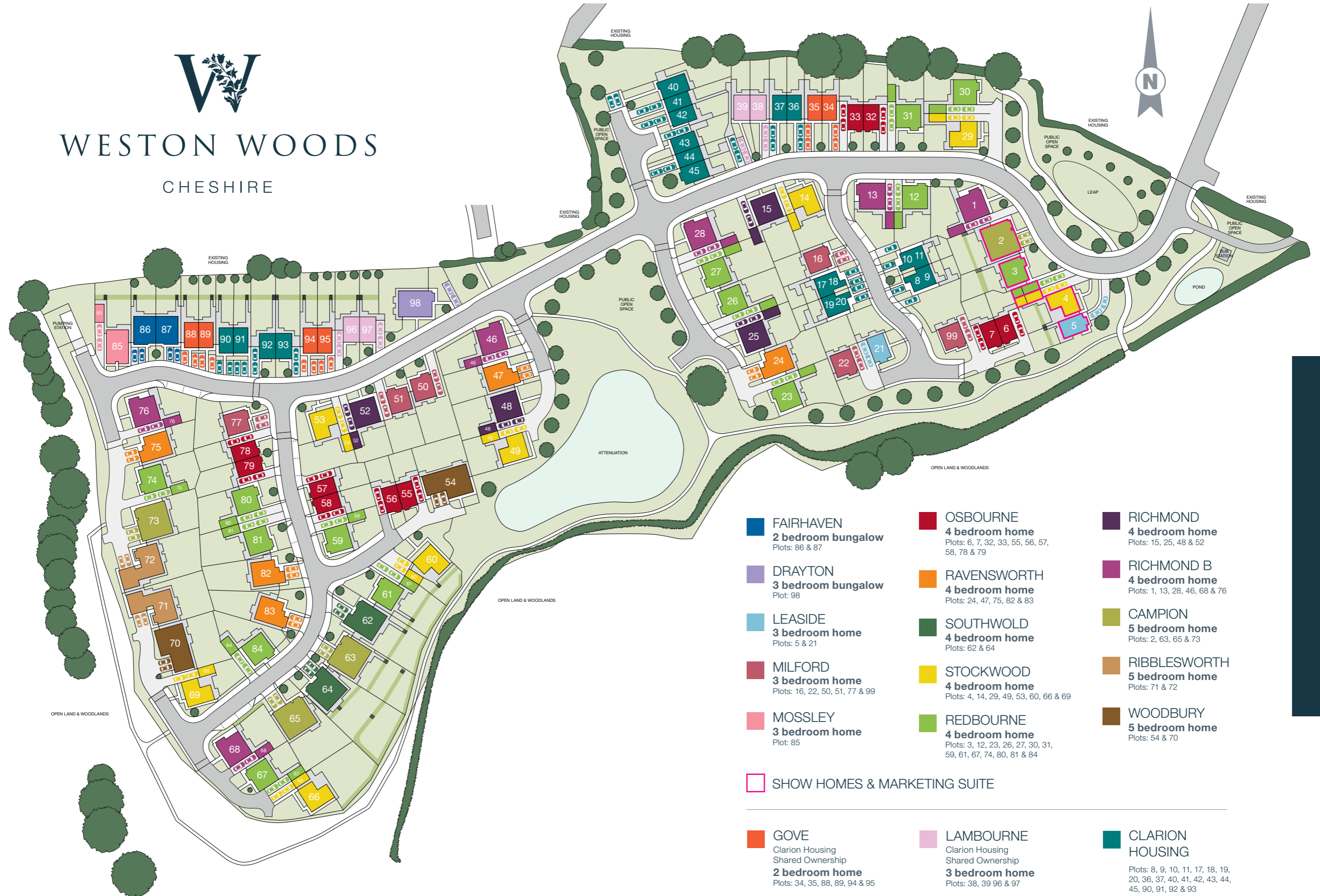
DEVELOPMENT LAYOUT



Shawbrook Manor Ribblesworth show home interior

# WESTON WOODS

## CHESHIRE



This development layout plan depicts the intended layout and development mix at the time of going to press, however those intentions may change and a purchaser cannot rely on the details shown on this plan. Landscaping shown is only indicative. Any queries should be raised through the conveyancing process in the usual way.

**LOVELL**  
HOMES

## THE SPECIFICATION

  
WESTON  
WOODS  
CHESHIRE



# SPECIFICATION

Lovell homes come with a high specification included as standard, because we know the small things can make a big difference. To guarantee a quality finish for your home we have partnered with some of the most sought-after brands in interiors, such as Kohler, Mira and Symphony to name a few.

10-year NHBC warranty  
Gas central heating

## Kitchen

- Fully fitted Symphony kitchens
- Stainless steel sink with mixer tap
- Brushed steel oven
- Brushed steel gas hob
- Stainless steel splashback to hob
- Chimney hood
- Integrated fridge freezer
- Integrated dishwasher to 4 & 5 beds only
- LED under cupboard lighting

## Utility

- Matching Symphony unit
- Stainless steel sink

## Cloakroom

- White contemporary Kohler sanitaryware
- Chrome fittings
- Ceramic wall tiling^

## Bathroom

- White contemporary Kohler sanitaryware
- Chrome fittings
- Shaver socket
- Ceramic wall tiling^
- Chrome towel rail to 3, 4 & 5 beds only

## En-Suite

- White contemporary sanitaryware
- Mira chrome fittings
- Mira shower
- Ceramic tiling to shower cubicle
- Ceramic tiling splashback to wash hand basin
- Chrome towel rail to 4 & 5 beds in en-suite 1

## Decoration

- White satinwood finish to internal joinery
- White emulsion ceilings and walls
- White grained finish to internal doors
- Dual finish chrome and brass internal ironmongery

## External Windows and Doors

- Black front door
- White UPVC double-glazed windows
- White UPVC rear door
- White UPVC French doors to 3, 4 & 5 beds only

## External Finishes

- Turf and planting to front garden \*
- Timber fencing to rear boundaries\*
- Paved patio area to rear

## Lighting

- Chrome downlights to kitchen
- Chrome downlights to bathroom to 3, 4 & 5 beds only
- Chrome downlights to en-suite to 4 & 5 beds only
- Pendant light fitting to all other rooms

## Electrical

- White sockets and switches
- TV socket to living room and bedroom 1
- BT socket to living room and bedroom 1
- Mains powered smoke detectors to all floors
- Wired chrome door bell
- External socket

# FAIRHAVEN

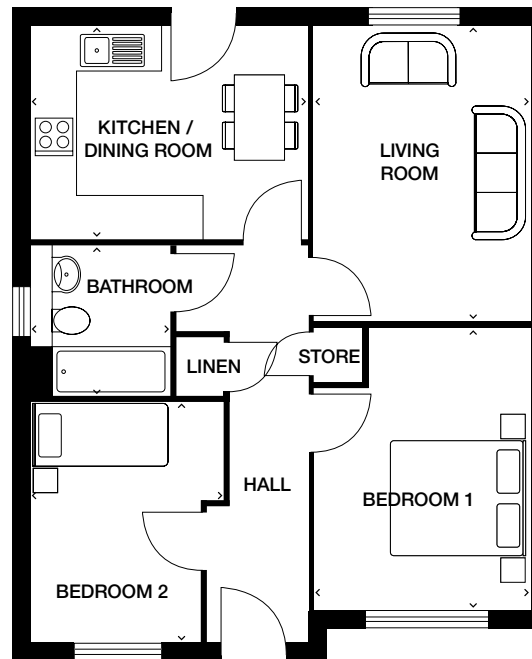
2 bedroom bungalow



CGIs are indicative only and elevations are subject to change, external finishes, features and road treatments may vary.

# FAIRHAVEN

## 2 bedroom bungalow



### Ground floor

**Kitchen/Dining Room** 3900mm x 3000mm (max) 12'9" x 9'10" (max)

**Living Room** 3060mm x 4170mm (max) 10'0" x 13'8" (max)

**Bedroom 1** 3060mm x 4020mm (max) 10'0" x 13'2" (max)

**Bedroom 2** 2700mm x 3390mm (max) 8'10" x 11'1" (max)

**Bathroom** 1940mm x 2160mm (max) 6'4" x 7'1" (max)

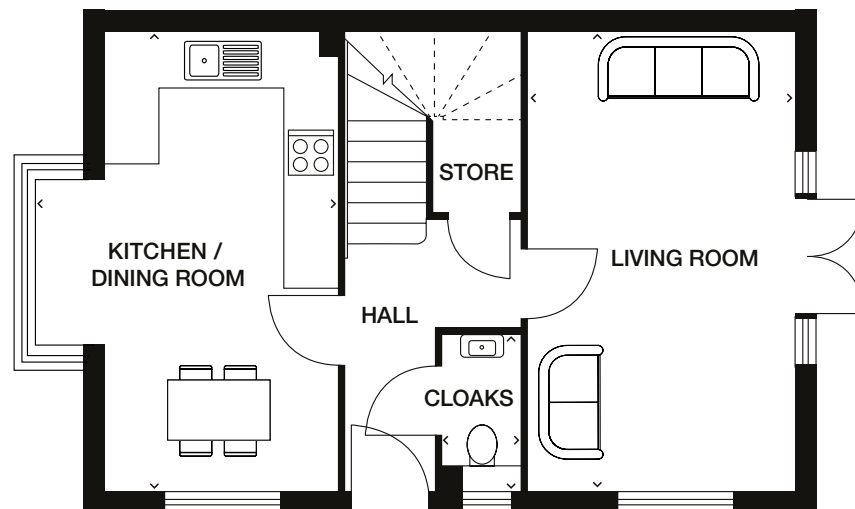
LEASIDE  
3 bedroom home

  
WESTON  
WOODS  
CHESHIRE

CGIs are indicative only and elevations are subject to change, external finishes, features and road treatments may vary.

# LEASIDE

## 3 bedroom home

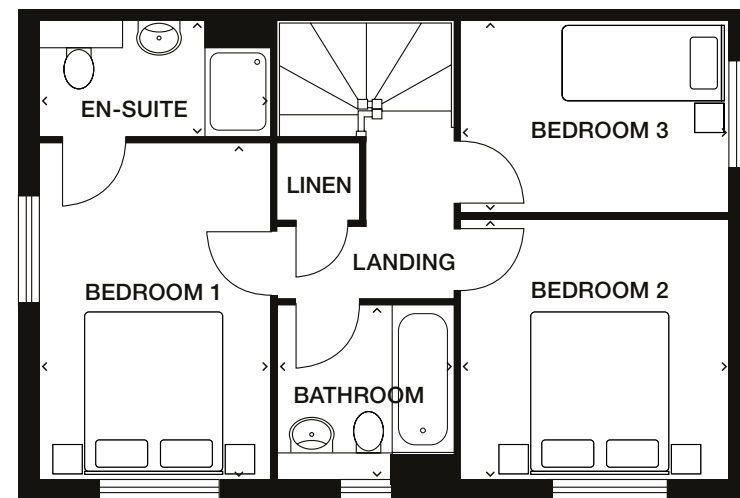


### Ground floor

**Kitchen/Dining Room** 5250mm x 3450mm (max) 17'2" x 11'3" (max)

**Living Room** 3060mm x 5250mm (max) 10'0" x 17'2" (max)

**Cloaks** 900mm x 1740mm (max) 2'11" x 5'8"(max)



### First floor

**Bedroom 1** 2660mm x 3870mm (max) 8'8" x 12'8" (max)

**En-suite** 2660mm x 1300mm (max) 8'8" x 4'3" (max)

**Bedroom 2** 3060mm x 2990mm (max) 10'0" x 9'9" (max)

**Bedroom 3** 3060mm x 2170mm (max) 10'0" x 7'1" (max)

**Bathroom** 2045mm x 1960mm (max) 6'8" x 6'5" (max)

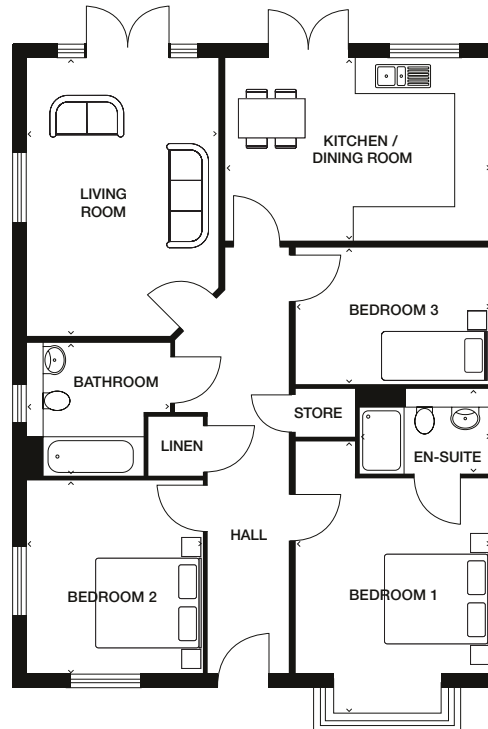
DRAYTON  
3 bedroom bungalow



CGIs are indicative only and elevations are subject to change, external finishes, features and road treatments may vary.

# DRAYTON

## 3 bedroom bungalow



### Ground floor

**Kitchen/Dining Room** 4725mm x 3230mm (max) 15'6" x 10'7" (max)

**Living Room** 3410mm x 4920mm (max) 11'2" x 16'1" (max)

**Bedroom 1** 4795mm x 3465mm (max) 15'8" x 11'4" (max)

**En-suite** 2320mm x 1520mm (max) 7'7" x 4'11" (max)

**Bedroom 2** 3150mm x 3420mm (max) 10'4" x 11'2" (max)

**Bedroom 3** 3460mm x 2440mm (max) 11'4" x 8'0" (max)

**Bathroom** 2545mm x 2400mm (max) 8'4" x 7'10" (max)

# MILFORD

3 bedroom home

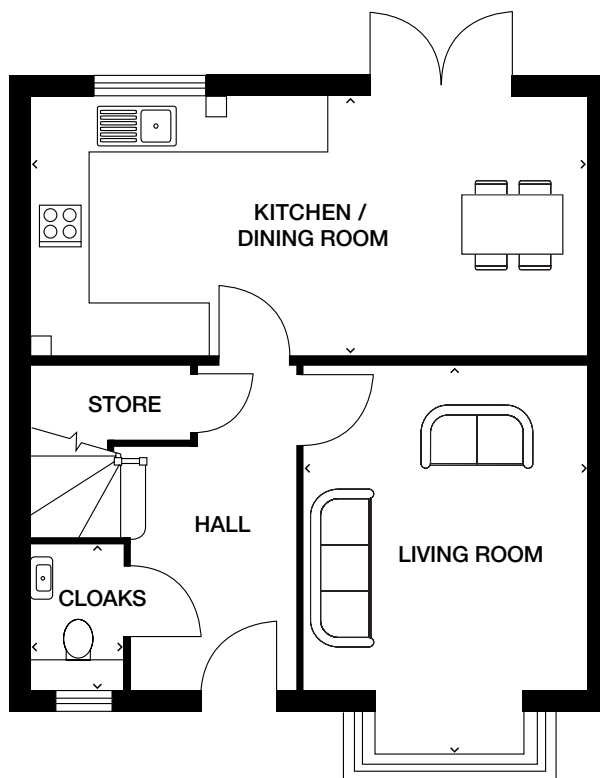
  
WESTON  
WOODS  
CHESHIRE



CGIs are indicative only and elevations are subject to change, external finishes, features and road treatments may vary.

# MILFORD

## 3 bedroom home

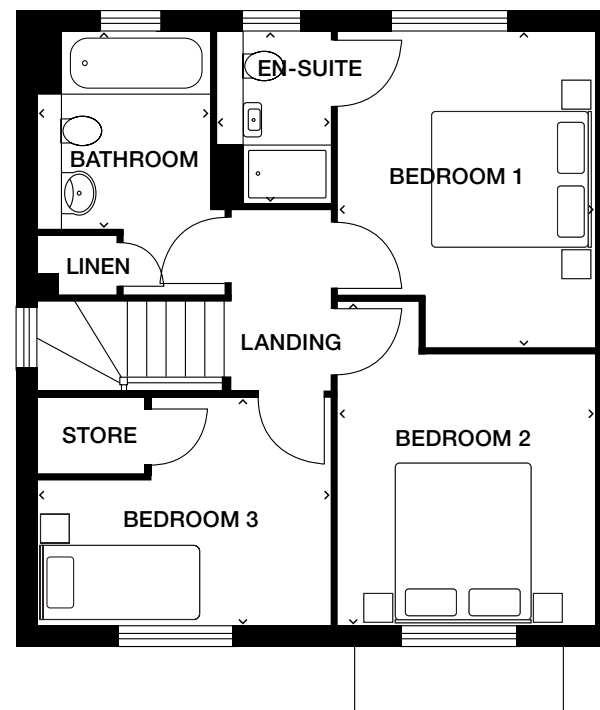


### Ground floor

**Kitchen/Dining Room** 6485mm x 3020mm (max) 21'3" x 9'10" (max)

**Living Room** 3315mm x 4555mm (max) 10'10" x 14'11" (max)

**Cloaks** 1000mm x 1630mm (max) 3'3" x 5'4" (max)



### First floor

**Bedroom 1** 2995mm x 3680mm (max) 9'9" x 12'0" (max)

**En-suite** 1335mm x 1995mm (max) 4'4" x 6'6" (max)

**Bedroom 2** 2995mm x 3760mm (max) 9'9" x 12'4" (max)

**Bedroom 3** 3400mm x 2620mm (max) 11'1" x 8'7" (max)

**Bathroom** 1970mm x 2295mm (max) 6'5" x 7'6" (max)

Plot 77 window aspect differs from the floor plans shown. Please speak to your sales executive for full details.

MOSSLEY

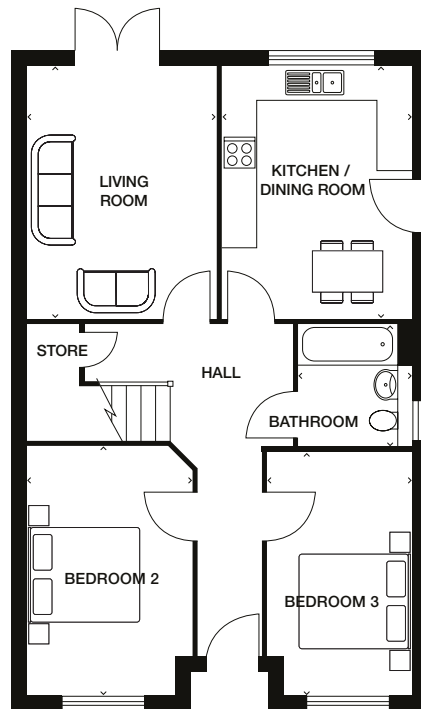
3 bedroom home

  
WESTON  
WOODS  
CHESHIRE

CGIs are indicative only and elevations are subject to change, external finishes, features and road treatments may vary.

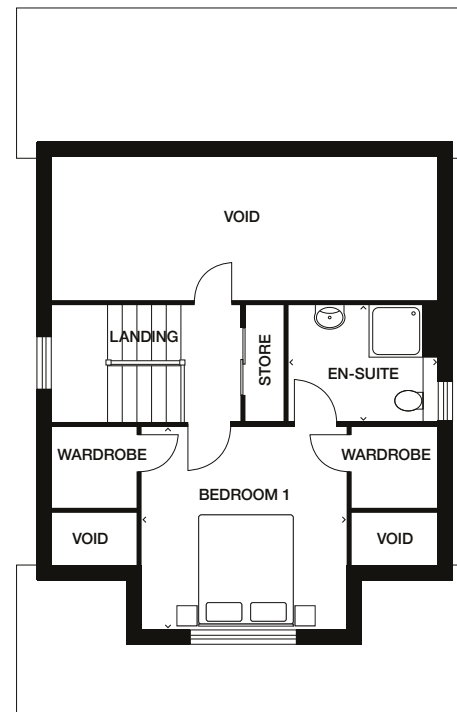
# MOSSLEY

## 3 bedroom home



Ground floor

**Kitchen/Dining Room** 3250mm x 4330mm (max) 10'8" x 14'2" (max)  
**Living Room** 3250mm x 4330mm (max) 10'8" x 14'2" (max)  
**Bedroom 2** 2850mm x 4250mm (max) 9'4" x 13'11" (max)  
**Bedroom 3** 2475mm x 4160mm (max) 8'1" x 13'7" (max)  
**Bathroom** 1950mm x 2090mm (max) 6'4" x 6'10" (max)



First floor

**Bedroom 1** 3500mm x 3450mm (max) 11'5" x 11'3" (max)  
**En-suite** 2535mm x 2000mm (max) 8'3" x 6'6" (max)

OSBOURNE

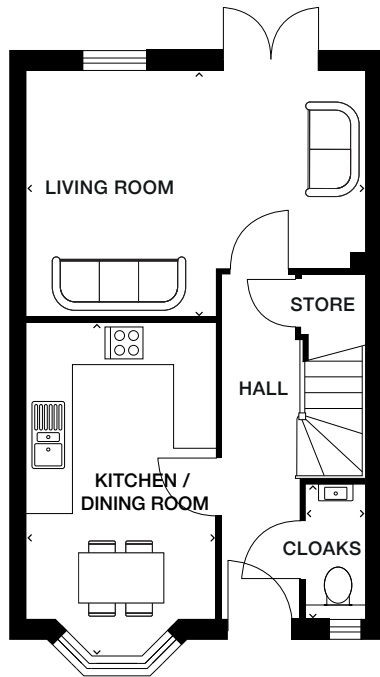
4 bedroom home



CGIs are indicative only and elevations are subject to change, external finishes, features and road treatments may vary.

# OSBOURNE

## 4 bedroom home

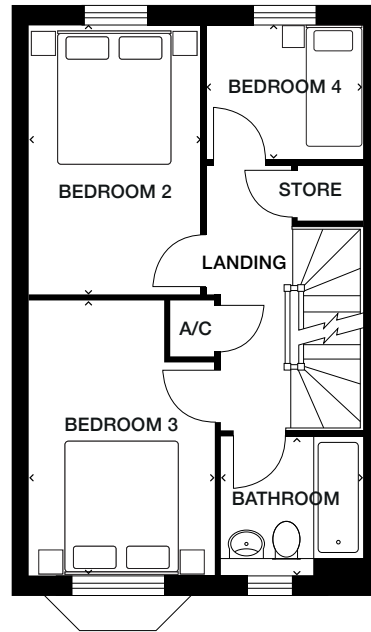


### Ground floor

**Kitchen/Dining Room** 2750mm x 4720mm (max) 9'0" x 15'5" (max)

**Living Room** 4910mm x 3560mm (max) 16'1" x 11'8" (max)

**Cloaks** 860mm x 1950mm (max) 2'9" x 6'4" (max)



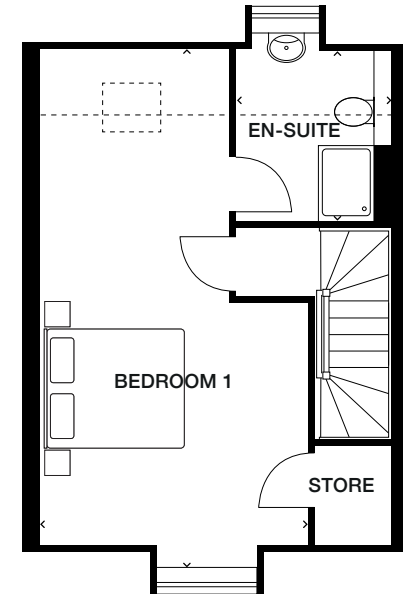
### First floor

**Bedroom 4** 2246mm x 1985mm (max) 7'4" x 6'6" (max)

**Bedroom 2** 2570mm x 3945mm (max) 8'5" x 12'11" (max)

**Bedroom 3** 2760mm x 3910mm (max) 9'0" x 12'9" (max)

**Bathroom** 2060mm x 1950mm (max) 6'9" x 6'4" (max)



### Second floor

**Bedroom 1** 3800mm x 7990mm (max) 12'5" x 26'2" (max)

**En-suite** 2120mm x 2300mm (max) 6'11" x 7'6" (max)

# RAVENSWORTH

4 bedroom home

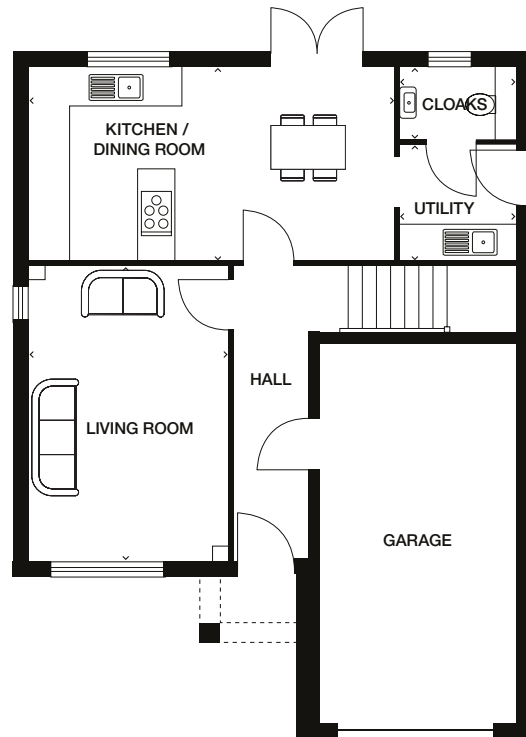
  
WESTON  
WOODS  
CHESHIRE



CGIs are indicative only and elevations are subject to change, external finishes, features and road treatments may vary.

# RAVENSWORTH

## 4 bedroom home



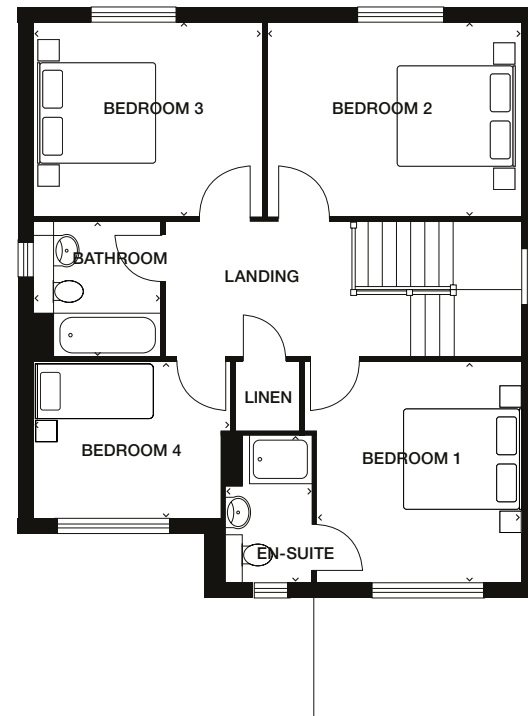
### Ground floor

**Kitchen/Dining Room** 5820mm x 3045mm (max) 19'1" x 9'11" (max)

**Living Room** 3145mm x 4695mm (max) 10'3" x 15'4" (max)

**Cloaks** 1810mm x 1100mm (max) 5'11" x 3'7" (max)

**Utility** 1810mm x 1855mm (max) 5'11" x 6'1" (max)



### First floor

**Bedroom 1** 3440mm x 3224mm (max) 11'3" x 10'6" (max)

**En-suite** 1365mm x 2275mm (max) 4'5" x 7'5" (max)

**Bedroom 2** 4070mm x 3045mm (max) 13'4" x 9'11" (max)

**Bedroom 3** 3555mm x 3045mm (max) 11'8" x 9'11" (max)

**Bedroom 4** 3080mm x 2426mm (max) 10'1" x 7'11" (max)

**Bathroom** 2175mm x 1970mm (max) 7'1" x 6'5" (max)



Customers should note the computer generated image shown is an illustration of the Ravensworth house type and elevations are subject to change. External finishes, features, landscaping, roofing, configuration and road treatments may vary from plot to plot. Materials used may also differ from plot to plot including render and roof tile colours. Please confirm with your sales executive the material finish of the plot you are interested in. Dimensions stated are within 50mm (2") but should not be used as a basis for furnishings, furniture or appliance spaces etc. Dimensions for such purposes must be verified against actual site measurements. Please note the handing of plots, door and window positions & sizes may vary from the floor plans shown. Please check individual plot details with our sales team.



# STOCKWOOD

4 bedroom home

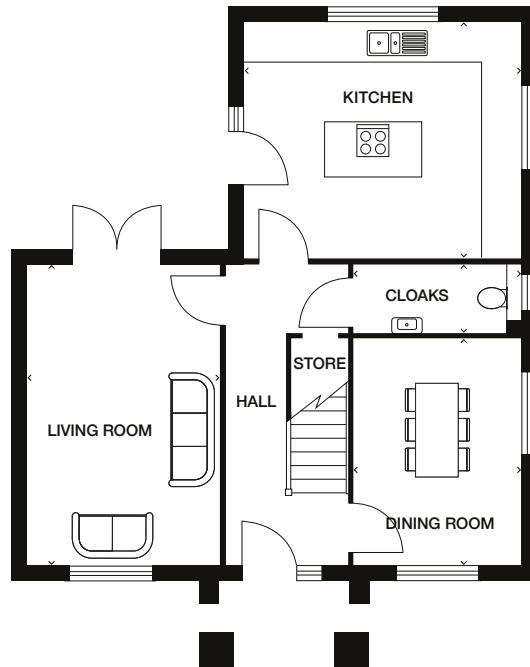
  
WESTON  
WOODS  
CHESHIRE



CGIs are indicative only and elevations are subject to change, external finishes, features and road treatments may vary.

# STOCKWOOD

## 4 bedroom home



### Ground floor

**Kitchen** 4460mm x 3810mm (max) 14'7" x 12'6" (max)

**Living Room** 3125mm x 4910mm (max) 10'3" x 16'1" (max)

**Dining Room** 2725mm x 3685mm (max) 8'11" x 12'1" (max)

**Cloaks** 2725mm x 1135mm (max) 8'11" x 3'8" (max)



### First floor

**Bedroom 1** 4460mm x 3850mm (max) 14'7" x 12'7" (max)

**En-suite** 2900mm x 1530mm (max) 9'6" x 5'0" (max)

**Bedroom 2** 2725mm x 4120mm (max) 8'11" x 13'6" (max)

**Bedroom 3** 3060mm x 2685mm (max) 10'0" x 8'9" (max)

**Bedroom 4** 3060mm x 2135mm (max) 10'0" x 7'0" (max)

**Bathroom** 2100mm x 2100mm (max) 6'10" x 6'10" (max)

# REDBOURNE

4 bedroom home

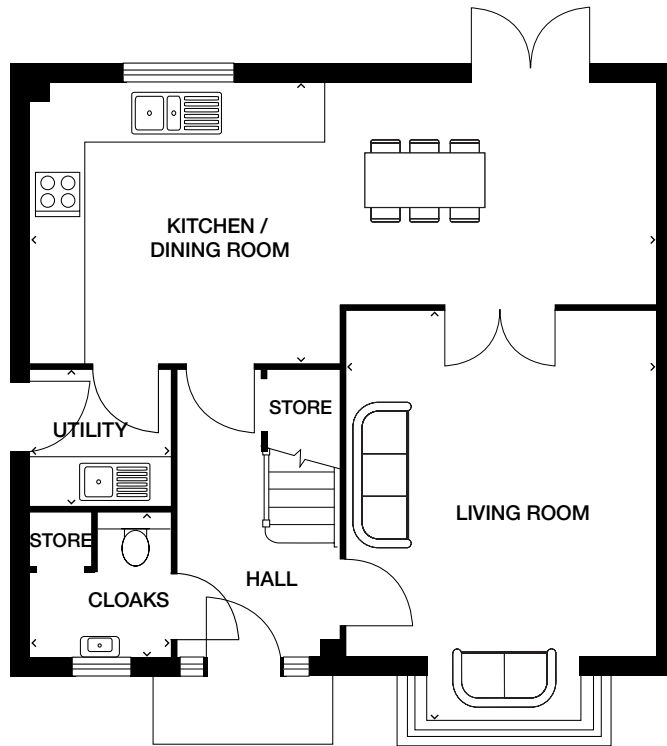
  
WESTON  
WOODS  
CHESHIRE



CGIs are indicative only and elevations are subject to change, external finishes, features and road treatments may vary.

# REDBOURNE

## 4 bedroom home



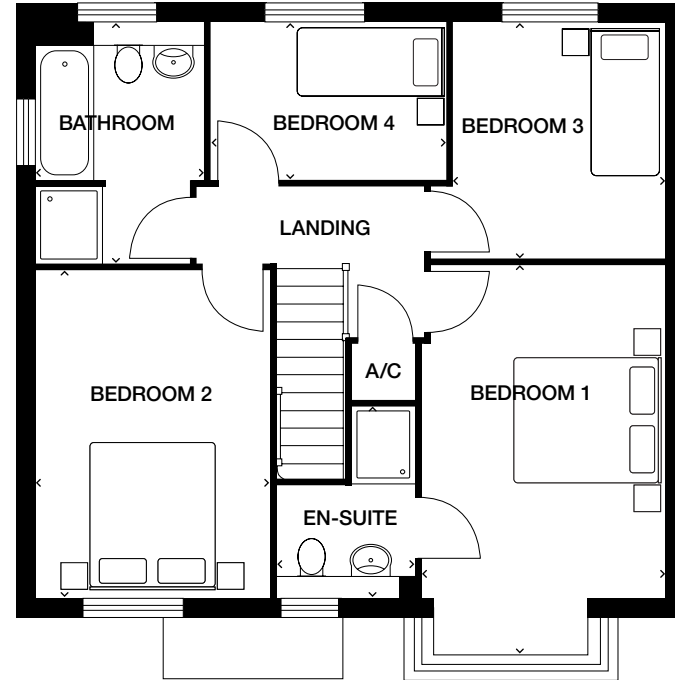
### Ground floor

**Kitchen/Dining Room** 7950mm x 3550mm (max) 26'1" x 11'7" (max)

**Living Room** 3895mm x 5140mm (max) 12'9" x 16'0" (max)

**Cloaks** 1750mm x 1835mm (max) 5'8" x 6'0" (max)

**Utility** 1750mm x 1730mm (max) 5'8" x 5'8" (max)



### First floor

**Bedroom 1** 3060mm x 4980mm (max) 10'0" x 16'4" (max)

**En-suite** 1790mm x 2385mm (max) 5'10" x 7'9" (max)

**Bedroom 2** 2910mm x 4125mm (max) 9'6" x 13'6" (max)

**Bedroom 3** 2640mm x 2990mm (max) 8'7" x 9'9" (max)

**Bedroom 4** 3030mm x 1980mm (max) 9'11" x 6'6" (max)

**Bathroom** 2090mm x 3055mm (max) 6'10" x 10'0" (max)

# RICHMOND

4 bedroom home

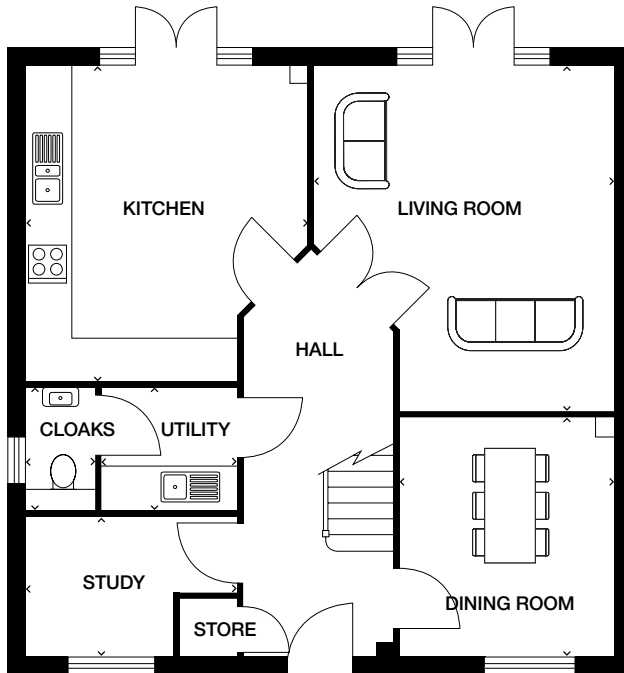
  
WESTON  
WOODS  
CHESHIRE



CGIs are indicative only and elevations are subject to change, external finishes, features and road treatments may vary.

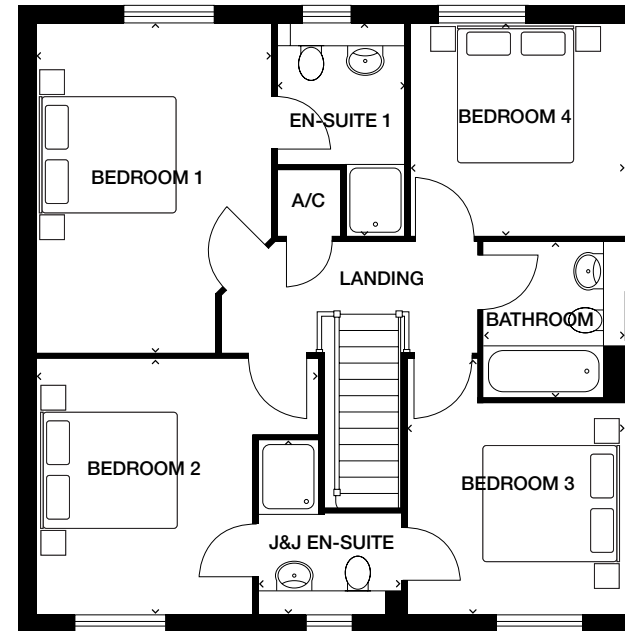
# RICHMOND

## 4 bedroom home



### Ground floor

**Kitchen** 3885mm x 4370mm (max) 12'9" x 14'4" (max)  
**Living Room** 4135mm x 4805mm (max) 13'6" x 15'9" (max)  
**Dining Room** 2950mm x 3275mm (max) 9'8" x 10'8" (max)  
**Study** 2900mm x 1920mm (max) 9'6" x 6'3" (max)  
**Cloaks** 960mm x 1695mm (max) 3'1" x 5'6" (max)  
**Utility** 1845mm x 1695mm (max) 6'0" x 5'6" (max)



### First floor

**Bedroom 1** 3250mm x 4550mm (max) 10'8" x 14'11" (max)  
**En-suite 1** 1770mm x 2940mm (max) 5'9" x 9'7" (max)  
**Bedroom 2** 3895mm x 3530mm (max) 12'9" x 11'7" (max)  
**Bedroom 3** 3530mm x 3000mm (max) 11'7" x 9'10" (max)  
**Jack 'n' Jill En-suite** 1980mm x 2390mm (max) 6'6" x 7'10" (max)  
**Bedroom 4** 2970mm x 2940mm (max) 9'8" x 9'7" (max)  
**Bathroom** 1920mm x 2125mm (max) 6'3" x 6'11" (max)

# RICHMOND B

4 bedroom home

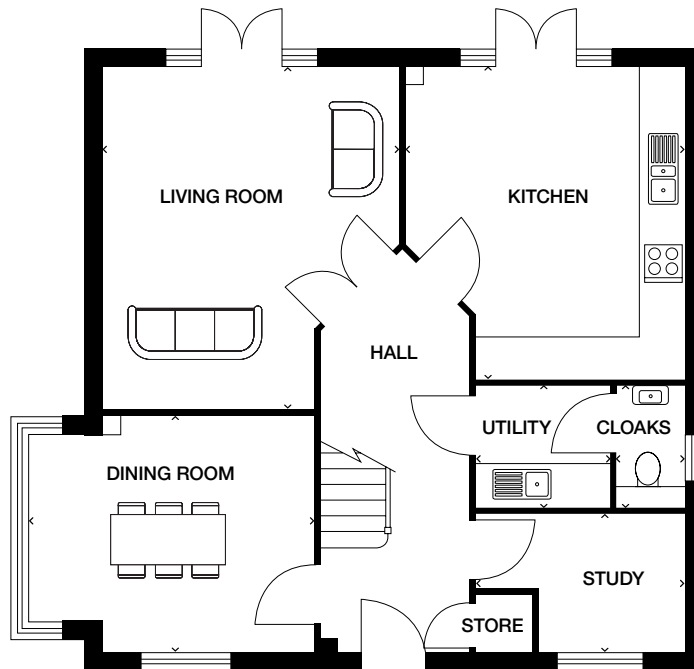
  
WESTON  
WOODS  
CHESHIRE



CGIs are indicative only and elevations are subject to change, external finishes, features and road treatments may vary.

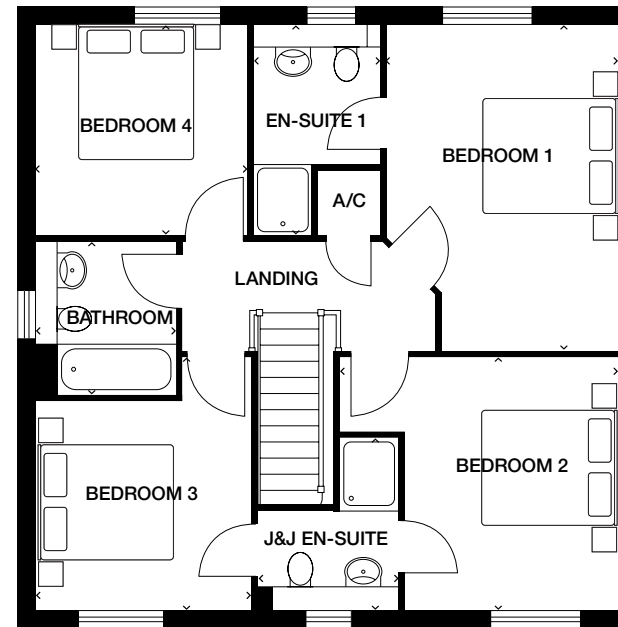
# RICHMOND B

## 4 bedroom home



### Ground floor

**Kitchen** 3885mm x 4370mm (max) 12'9" x 14'4" (max)  
**Living Room** 4135mm x 4805mm (max) 13'6" x 15'9" (max)  
**Dining Room** 2950mm x 3960mm (max) 9'8" x 12'11" (max)  
**Study** 2900mm x 1920mm (max) 9'6" x 6'3" (max)  
**Cloaks** 960mm x 1695mm (max) 3'1" x 5'6" (max)  
**Utility** 1845mm x 1695mm (max) 6'0" x 5'6" (max)



### First floor

**Bedroom 1** 3250mm x 4550mm (max) 10'8" x 14'11" (max)  
**En-suite 1** 1770mm x 2940mm (max) 5'9" x 9'7" (max)  
**Bedroom 2** 3895mm x 3530mm (max) 12'9" x 11'7" (max)  
**Bedroom 3** 3530mm x 3000mm (max) 11'7" x 9'10" (max)  
**Jack 'n' Jill En-suite** 1980mm x 2390mm (max) 6'6" x 7'10" (max)  
**Bedroom 4** 2970mm x 2940mm (max) 9'8" x 9'7" (max)  
**Bathroom** 1920mm x 2125mm (max) 6'3" x 6'11" (max)

# SOUTHWOLD

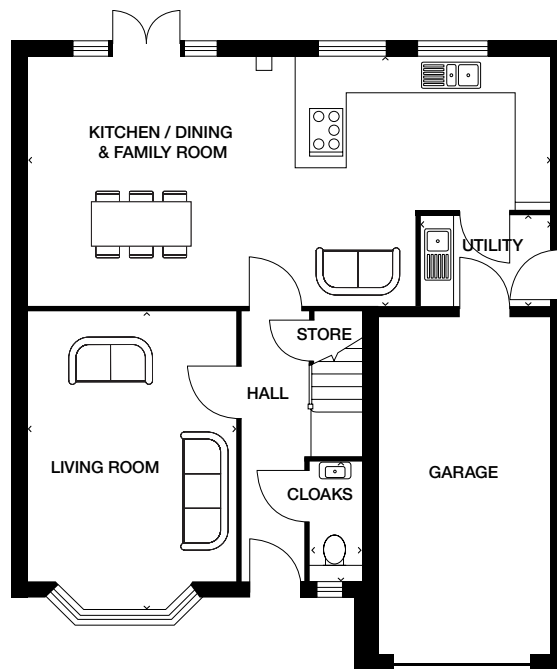
4 bedroom home

  
WESTON  
WOODS  
CHESHIRE

CGIs are indicative only and elevations are subject to change, external finishes, features and road treatments may vary.

# SOUTHWOLD

## 4 bedroom home



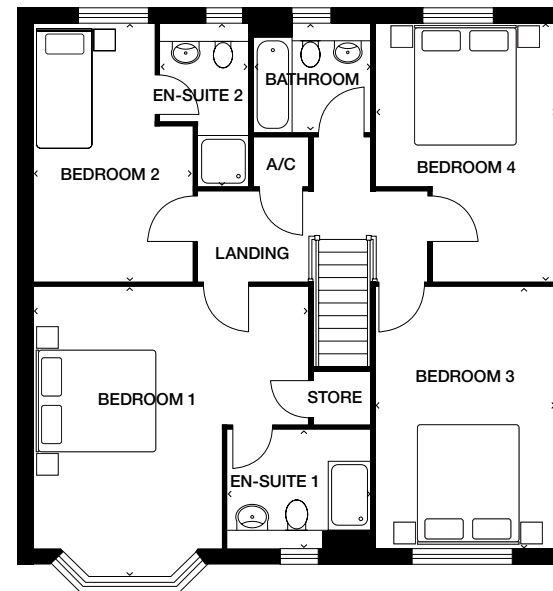
### Ground floor

**Kitchen/Dining & Family Room** 9300mm x 4395mm (max) 30'6" x 14'5" (max)

**Living Room** 3675mm x 5230mm (max) 12'0" x 17'1" (max)

**Utility** 2295mm x 1600mm (max) 7'6" x 5'3" (max)

**Cloaks** 930mm x 2060mm (max) 3'0" x 6'9" (max)



### First floor

**Bedroom 1** 4885mm x 4605mm (max) 16'0" x 15'1" (max)

**En-suite 1** 2570mm x 2060mm (max) 8'5" x 6'9" (max)

**Bedroom 2** 2800mm x 4580mm (max) 9'2" x 15'0" (max)

**En-suite 2** 1580mm x 2860mm (max) 5'2" x 9'4" (max)

**Bedroom 3** 3205mm x 4605mm (max) 10'6" x 15'1" (max)

**Bedroom 4** 3200mm x 4580mm (max) 10'6" x 15'0" (max)

**Bathroom** 2100mm x 1900mm (max) 6'10" x 6'2" (max)

# CAMPION

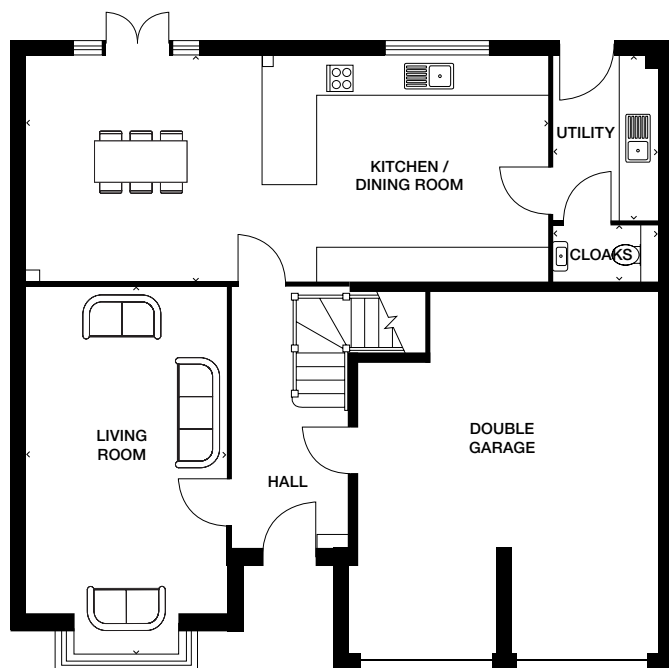
5 bedroom home

  
WESTON  
WOODS  
CHESHIRE

CGIs are indicative only and elevations are subject to change, external finishes, features and road treatments may vary.

# CAMPION

## 5 bedroom home



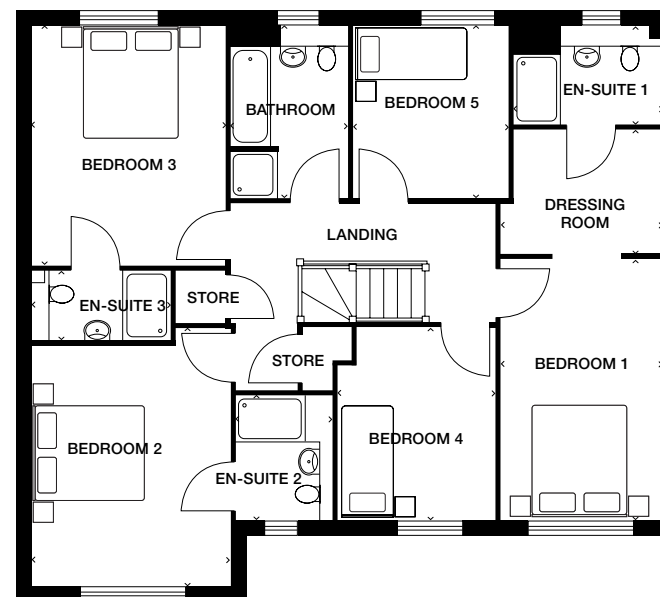
### Ground floor

**Kitchen/Dining Room** 8850mm x 3800mm (max) 29'0" x 12'5" (max)

**Living Room** 3335mm x 6170mm (max) 10'11" x 20'2" (max)

**Cloaks** 1710mm x 975mm (max) 5'7" x 3'2" (max)

**Utility** 1710mm x 2735mm (max) 5'7" x 8'11" (max)



### First floor

**Bedroom 1** 2700mm x 4370mm (max) 8'10" x 14'4" (max)

**Dressing Room** 2700mm x 2125mm (max) 8'10" x 6'11" (max)

**En-suite 1** 2475mm x 1610mm (max) 8'1" x 5'3" (max)

**Bedroom 2** 3335mm x 4335mm (max) 10'11" x 14'2" (max)

**En-suite 2** 1660mm x 2060mm (max) 5'5" x 6'9" (max)

**Bedroom 3** 3245mm x 4020mm (max) 10'7" x 13'2" (max)

**En-suite 3** 2310mm x 1175mm (max) 7'6" x 3'10" (max)

**Bedroom 4** 2685mm x 3210mm (max) 8'9" x 10'6" (max)

**Bedroom 5** 2650mm x 2860mm (max) 8'8" x 9'4" (max)

**Bathroom** 2010mm x 2860mm (max) 6'7" x 9'4" (max)

# RIBBLESWORTH

5 bedroom home

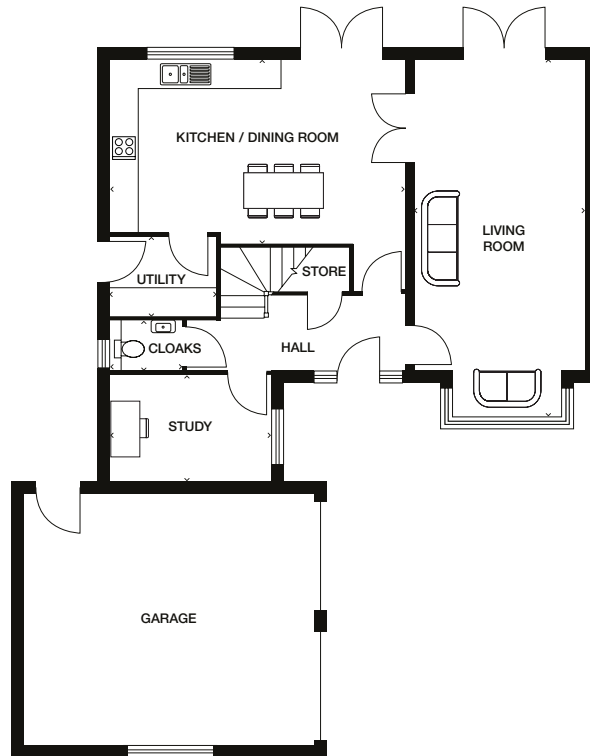
  
WESTON  
WOODS  
CHESHIRE



CGIs are indicative only and elevations are subject to change, external finishes, features and road treatments may vary.

# RIBBLESWORTH

## 5 bedroom home



### Ground floor

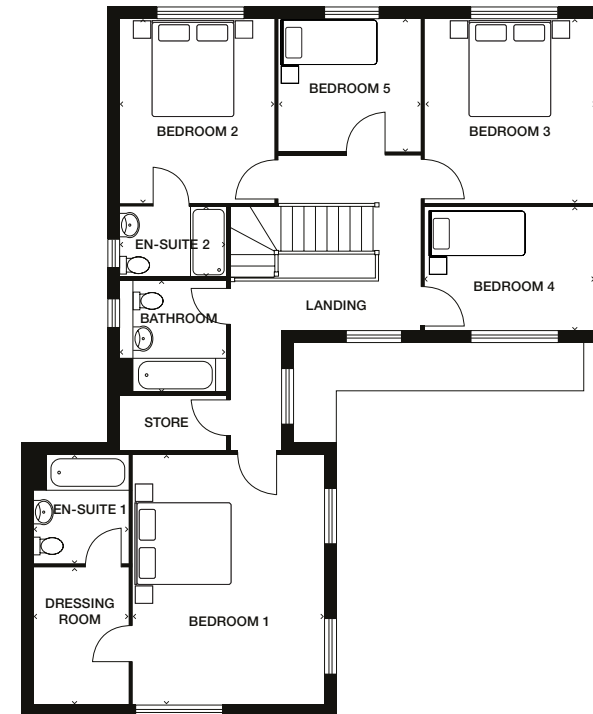
**Kitchen/Dining Room** 6145mm x 3830mm (max) 20'1" x 12'6" (max)

**Living Room** 3550mm x 7275mm (max) 11'7" x 23'10" (max)

**Study** 3335mm x 2170mm (max) 10'11" x 7'1" (max)

**Cloaks** 1500mm x 1050mm (max) 4'11" x 3'5" (max)

**Utility** 2205mm x 1665mm (max) 7'2" x 5'5" (max)



### First floor

**Bedroom 1** 3980mm x 5135mm (max) 13'0" x 16'10" (max)

**En-suite 1** 1965mm x 2215mm (max) 6'5" x 7'3" (max)

**Dressing Room** 1965mm x 2830mm (max) 6'5" x 9'3" (max)

**Bedroom 2** 3200mm x 3830mm (max) 10'6" x 12'6" (max)

**En-suite 2** 2205mm x 1455mm (max) 7'2" x 4'9" (max)

**Bedroom 3** 3530mm x 3845mm (max) 11'7" x 12'7" (max)

**Bedroom 4** 3530mm x 2530mm (max) 11'7" x 8'3" (max)

**Bedroom 5** 2950mm x 2750mm (max) 9'8" x 9'0" (max)

**Bathroom** 2205mm x 2300mm (max) 7'2" x 7'6" (max)

# WOODBURY

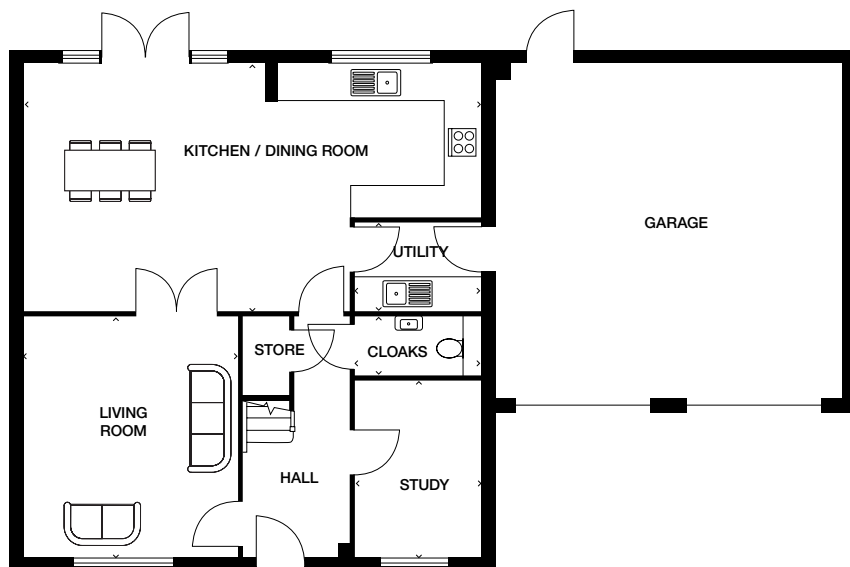
5 bedroom home

  
WESTON  
WOODS  
CHESHIRE

CGIs are indicative only and elevations are subject to change, external finishes, features and road treatments may vary.

# WOODBURY

## 5 bedroom home



### Ground floor

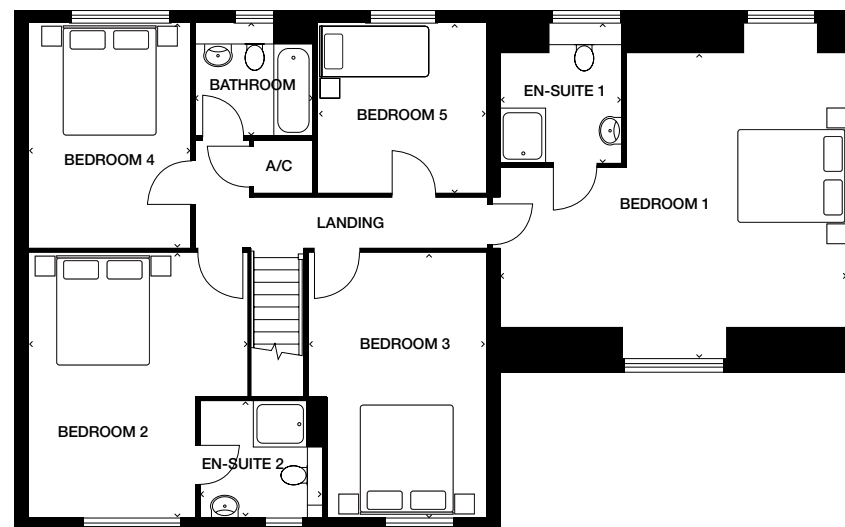
**Kitchen/Dining Room** 8285mm x 4445mm (max) 27'2" x 14'7" (max)

**Living Room** 3850mm x 4360mm (max) 12'7" x 14'3" (max)

**Study** 2260mm x 3210mm (max) 7'4" x 10'6" (max)

**Cloaks** 2260mm x 1060mm (max) 7'5" x 3'5" (max)

**Utility** 2260mm x 1590mm (max) 7'5" x 5'2" (max)



### First floor

**Bedroom 1** 6260mm x 5530mm (max) 20'6" x 18'1" (max)

**En-suite 1** 2080mm x 2410mm (max) 6'9" x 7'10" (max)

**Bedroom 2** 3907mm x 4805mm (max) 12'9" x 15'9" (max)

**En-suite 2** 2220mm x 2060mm (max) 7'3" x 6'9" (max)

**Bedroom 3** 3210mm x 4805mm (max) 10'6" x 15'9" (max)

**Bedroom 4** 2835mm x 4060mm (max) 9'3" x 13'3" (max)

**Bedroom 5** 3100mm x 2950mm (max) 10'2" x 9'8" (max)

**Bathroom** 2155mm x 1920mm (max) 7'0" x 6'3" (max)



East Avenue, Weston, Cheshire CW2 5LZ  
T: 01270 869 835



 @lovell\_uk  /lovellhomes

**lovell.co.uk**



**LOVELL**  
HOMES

A **MORGAN SINDALL GROUP** COMPANY