



THE ELEVEN

3 bedroom home

Plots 51, 52, 53, 54 & 55



CGI shows plot 51. CGIs are indicative,
external finishes and features may vary.

Ground floor

Kitchen

2950mm x 3340mm (max) 9'8" x 10'11" (max)

Dining Room

4140mm x 2775mm 13'7" x 9'1"

Shower Room (excl. shower cubicle)

1570mm x 1940mm (max) 5'1" x 6'4" (max)

First floor

Bedroom 1

3980mm x 3370mm 13'0" x 11'0"

Bedroom 2

4157mm x 2745mm 13'7" x 9'0"

Bathroom

2200mm x 2010mm (max) 7'2" x 6'7" (max)

Second floor

Living Room

5593mm x 3132mm 18'4" x 10'3"

Bedroom 3

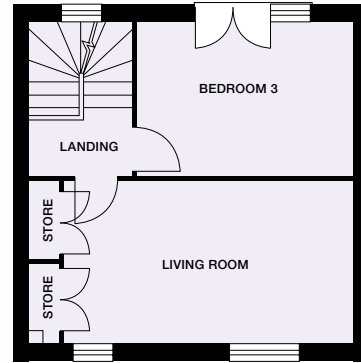
4157mm x 2983mm 13'7" x 9'9"

Total SqFt

1259

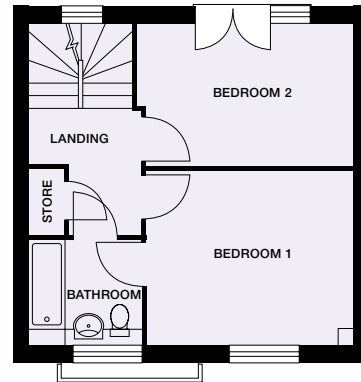
Dimensions stated are within 50mm (2") but should not be used as a basis for furnishings, furniture or appliance spaces etc. Dimensions for such purposes must be verified against actual site measurements. Please note the handing of plots may vary from the floor plans shown. Please check individual plot details with our sales team.

Second floor



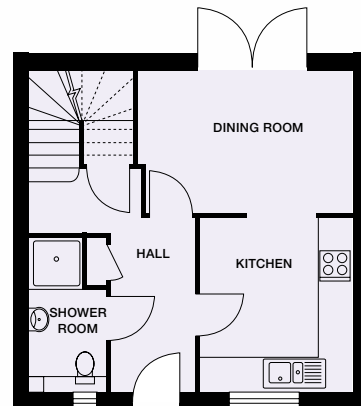
Additional side windows to plots
51 & 55 only

First floor



Additional side windows to plots
51 & 55 only

Ground floor



Additional side windows to plots
51 & 55 only